



TECHNICAL SPECIFICATIONS

CLASSIC PROGRAM BY ENVATECH

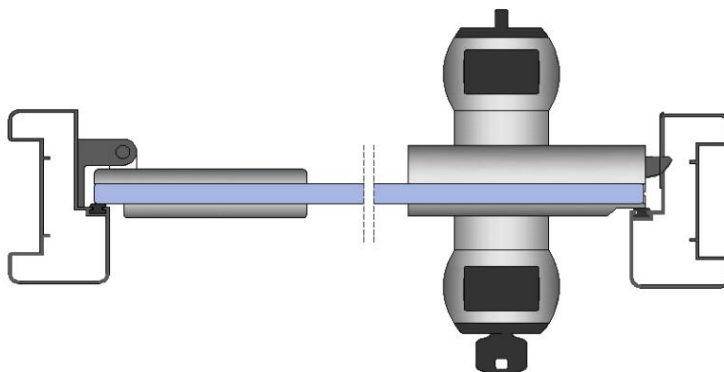
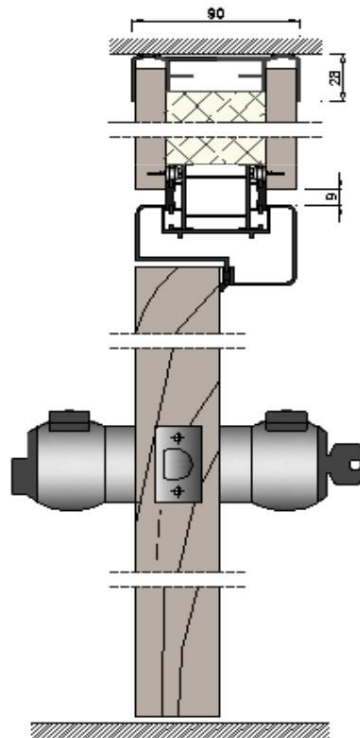
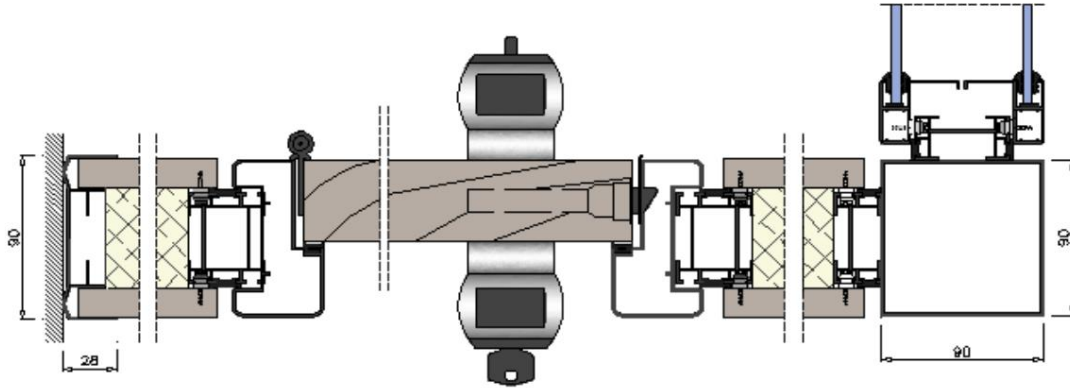
Fecha 03.04.2020

COLOR PANELS	SMOOTH:	02-MLSB	WHITE
		02-MLSG1	LIGHT GRAY
		02-MLSG2	DARK GRAY
		02-MLS01	ALUMINUM
	WOOD:	02-MMAA	MAPLE
		02-MMAH	IS
ALUMINUM COLOR		08-ANPM	SILVER
		08-LA9011M	MATTE BLACK
		08-LA9010M	MATTE WHITE
		08-ANIN*	INOX *
DOOR FRAME	STRAIGHT - 805		
INTERSECTION	9mm		
SCALED PANELS	Edge thickness 0.4mm		
RUBBER COLOR (without aluminum)	Aluminum	Eraser	
	08-ANPM	4 PM	SILVER
	08-LA9011M	04-9011	BLACK
	08-LA9010M	04-9010	SILVER
	08-ANIN*	4 PM	SILVER
LOWER BASE	443 - ZÓCALO		
UPPER CORONATION	446 - CORONATION		
START-UPS	446 - WALL		
	802 - SCREEN		
90° CORNER 3 EXITS	85 x 85 TUBE		
	BLIND TABOARD		
	85 x 85 TUBE		
PROFILES 1 GLASS	FRAMED		
	A TESTA		
PROFILES 2 GLASS	FRAMED		
BLIND DOOR HARDWARE	07-BISTD	FLAT HINGES	
	07-POMEPM	POMO MERONI PLATA	
	07-MNOLPM	TESA OLA SILVER LEVER	
	07-MNTU-U-PM*	SILVER "U" TUBULAR LEVER	
GLASS DOOR HARDWARE	07-BISTD05PM	SQUARE SILVER HINGES	
	07-POMEPM05	POMO MERONI PLATA	
	07-MNTU-U05PM*	SILVER "U" TUBULAR HANDLE*	
SLIDING DOOR HARDWARE	07-TISTD-U	STAINLESS STEEL "U" TUBULAR HANDLE	
	07-TICCE*	STAINLESS STEEL LOCKABLE HANDLE*	

(*) OPTIONAL (Please inquire about price and delivery time)

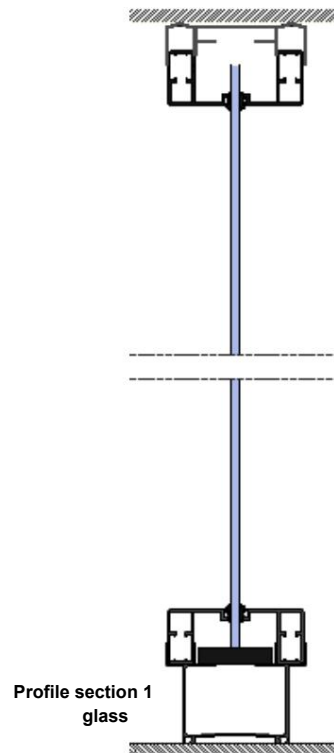
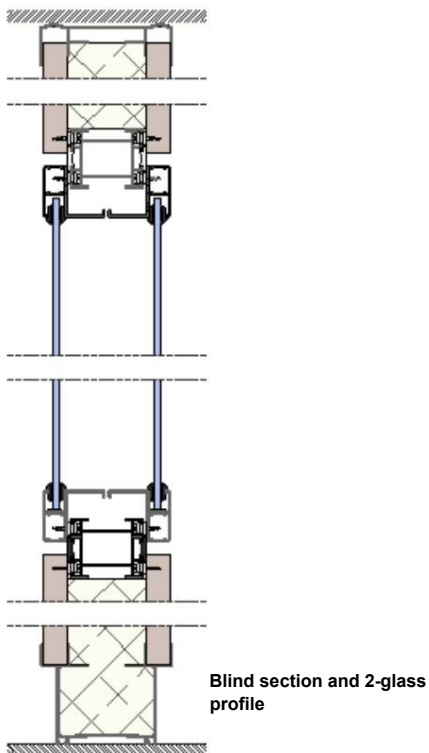
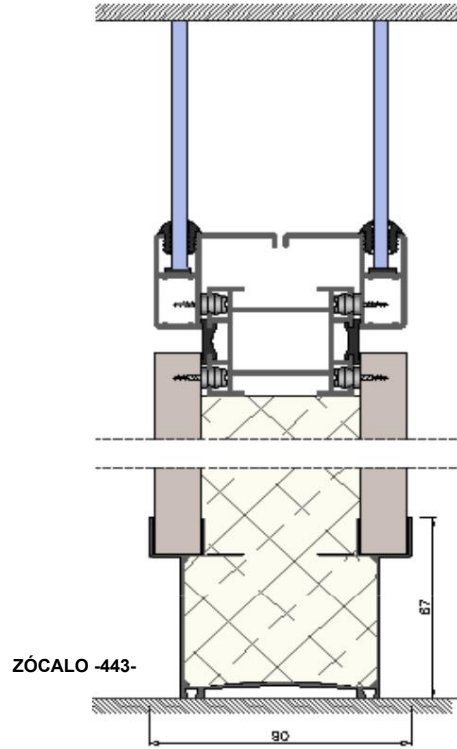
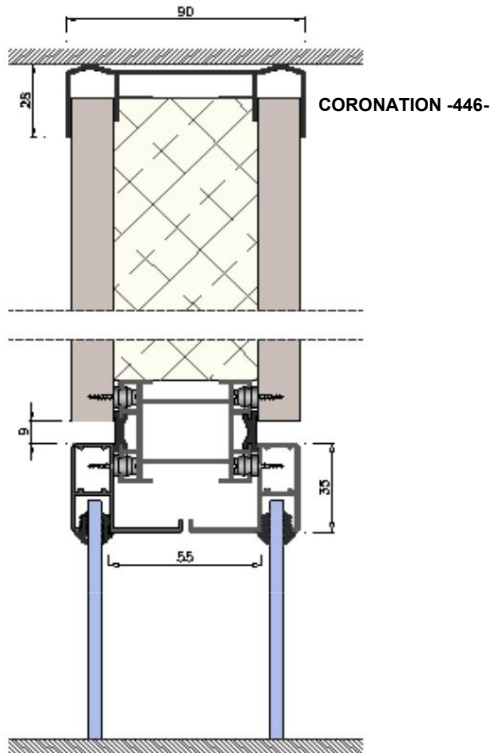
TECHNICAL DETAILS

805 door frame for solid and glass doors



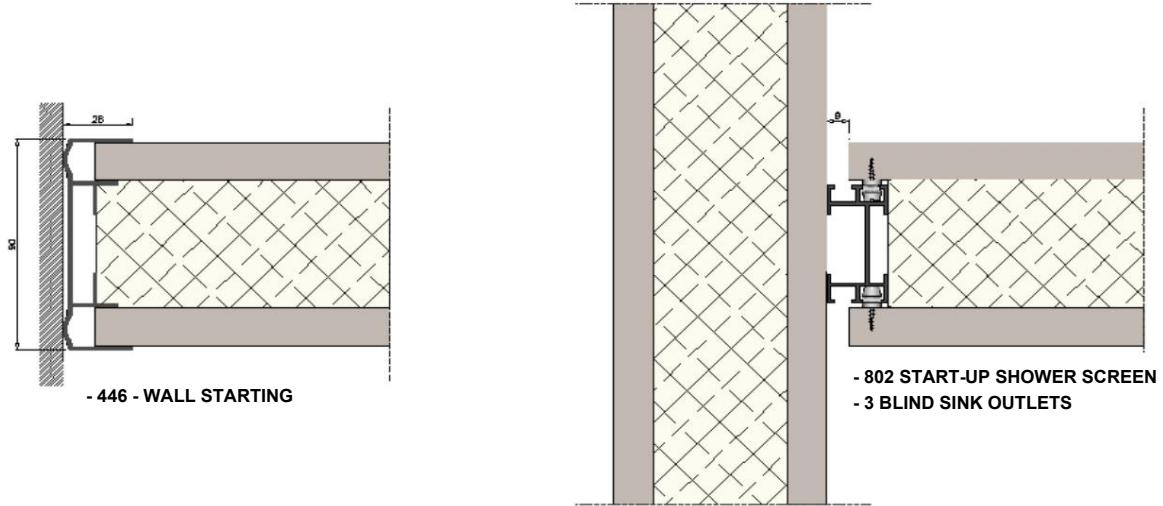
TECHNICAL DETAILS

Vertical sections

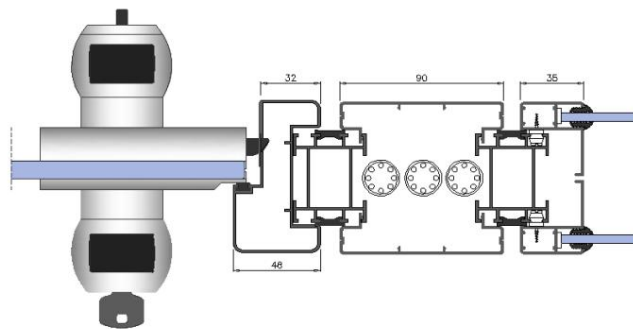
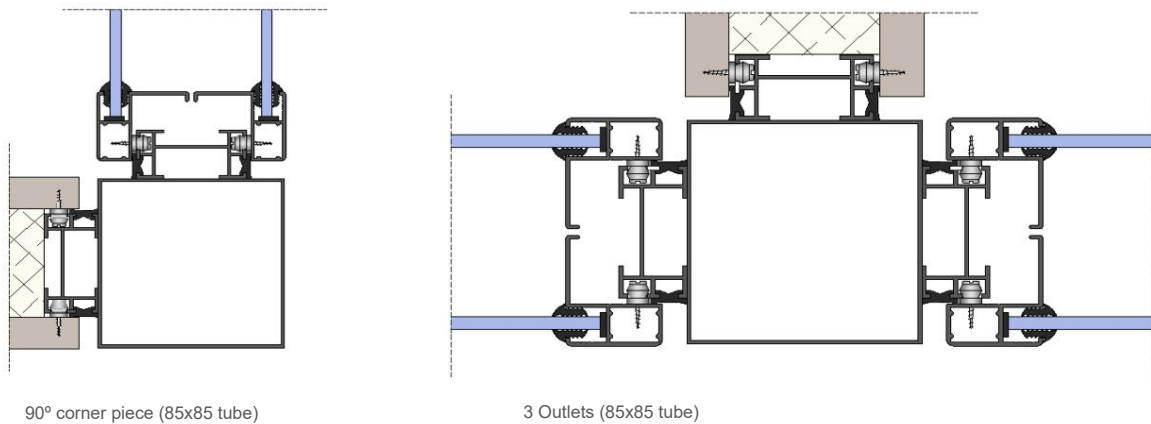


TECHNICAL DETAILS

Horizontal sections



Sections set



EGC - Cable Management

BLIND DOOR PROGRAM

STANDARD

POMO MERONI
SILVER



TESA OLA LEVER
SILVER



OPTIONAL*

TUBULAR "U" HANDLE
SILVER(*)



GLASS DOOR PROGRAM

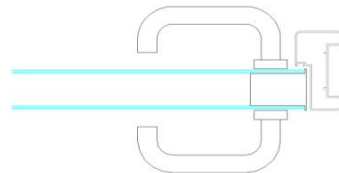
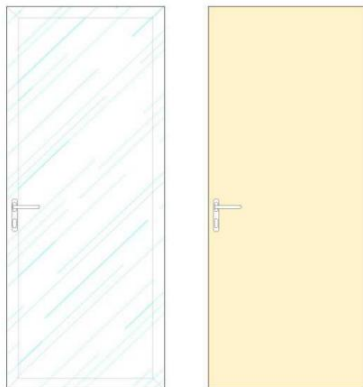
POMO MERONI PLATA



SILVER "U" TUBULAR LEVER
OPC*



DOUBLE GLAZED DOOR PROGRAM / ALUMINUM PROFILE PANEL ***



HARDWARE:

Stainless steel three-leaf hinges
Tubular handle "U" INOX finish

Framed glass door program ***



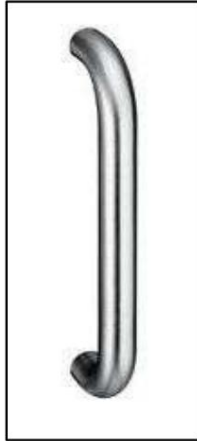
HARDWARE:

Flat SILVER hinges
SILVER tubular "U" Compact handle
Silver Adapter

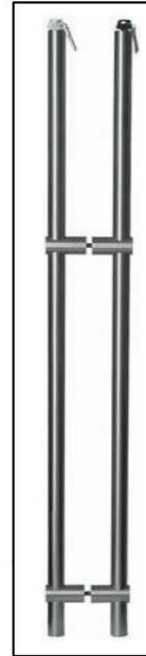
(***) Special door leaves. Please inquire about price and delivery time.

SLIDING DOOR PROGRAM

STAINLESS STEEL "U" TUBULAR HANDLE



STAINLESS STEEL LOCK HANDLE (OPTIONAL)*

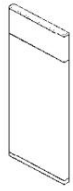


(*) **OPTIONAL (Please inquire about price and delivery time)**

BLIND MODULES

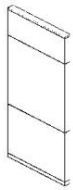


EC01

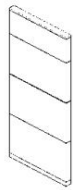


EC02

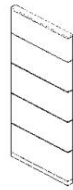
1000mm (width) module



EC03



EC04



EC05

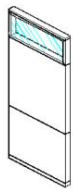
Modular width of 1000 and/or 2000mm

MODULES WITH DOUBLE GLAZING

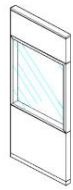
Modular 1000mm wide with blind end caps



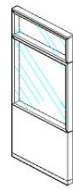
ED01



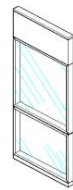
ED02



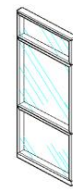
ED03



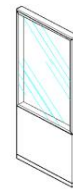
ED04



ED05



ED06



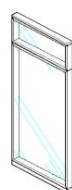
ED07



ED08



ED09



ED10



ED11

Modular widths of 1000 and/or 2000mm with blind end caps



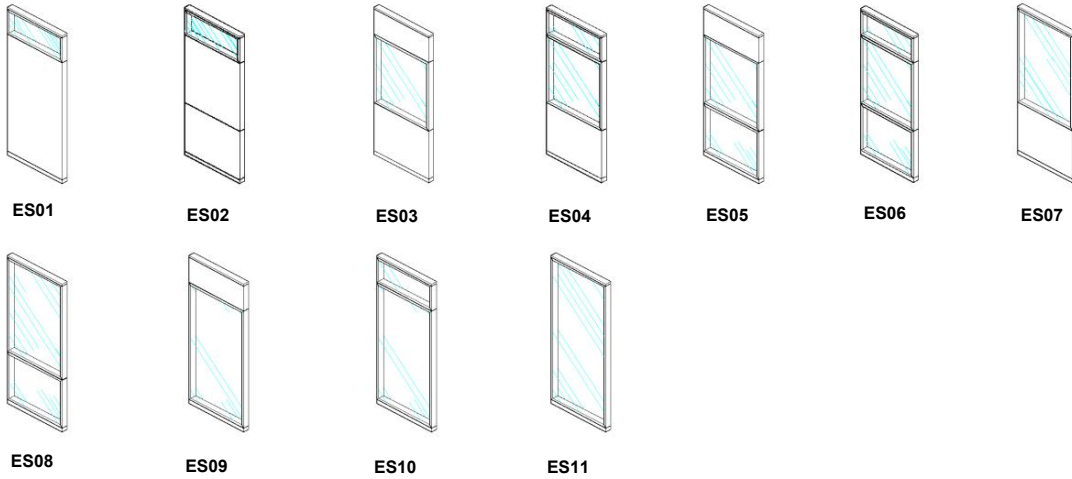
ED12



ED13

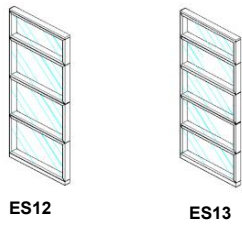
MODULES WITH A FRAMED GLASS

Modular 1000mm wide with blind end caps



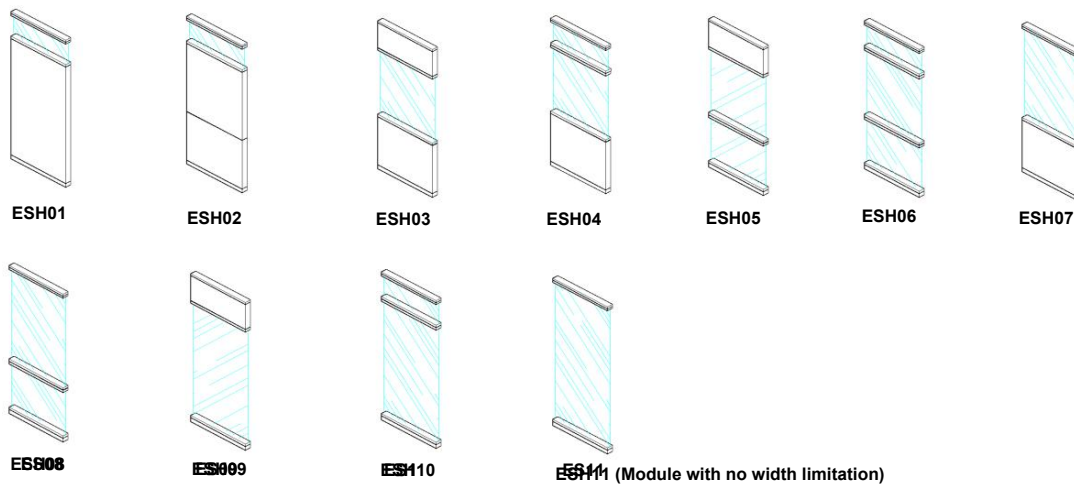
Modular widths of 1000 and/or 2000mm with blind end caps

Modular paneling without end caps with a maximum width of 2000mm** (please inquire about prices)



MODULES WITH A GLASS END

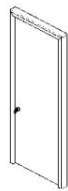
Modulation according to attached sketches



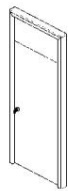
SINGLE-LEAF DOOR



EP901



EP902
h.max.2500



EP903



EPD904



EPS904



EP905



EPD906



EPS906



EP907
h.max.2750

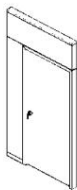


EP908(*)

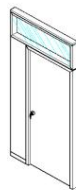


EP909

SINGLE LEAF DOOR + FIXED BLIND PANEL (1200)



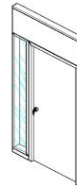
EP1201



EPD1202



EPS1202



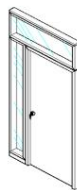
EPD1203



EPS1203



EPD1204



EPS1204



EP1205



EPD1206



EPS1206



EPD1207



EPS1207



EPD1208

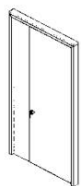


EPS1208

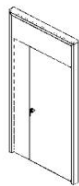
DOUBLE DOOR (1200)



EP1209



EP1210
h.max.2500



EP1211



EPS1212



EPD1212



EP1213



EPD1214



EPS1214



EP1215
h.max.2750mm



EP1216(*)



EP1217

DOUBLE DOOR (1700)



EP1701



EP1702
h.max.2500mm



EP1703



EPD1704



EPS1704



EP1705



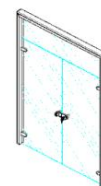
EPD1706



EPS1706



EP1707
h.max.2750mm



EPD1708(*)



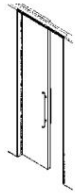
EPS1709

(*)NOTE: For door models *EP908*, *EP1216* and *EP1708*, the maximum installation height is 2750mm. For higher heights, a security door is required. Please inquire about pricing.

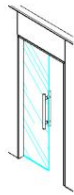
SINGLE LEAF SLIDING DOOR



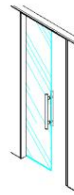
EPC901



**EPC902 h.max.
2500mm**



EPC905



**EPC907
h.max.2750mm**

TWO-LEAF SLIDING DOOR (1200)



EPC1201



**EPC1202
h.max2500mm**

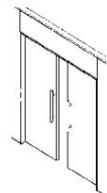


EPC1205

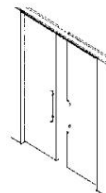


**EPC1207
h.max.2750mm**

TWO-LEAF SLIDING DOOR (1700)



EPC1701



**EPC1702
h.max.2500mm**



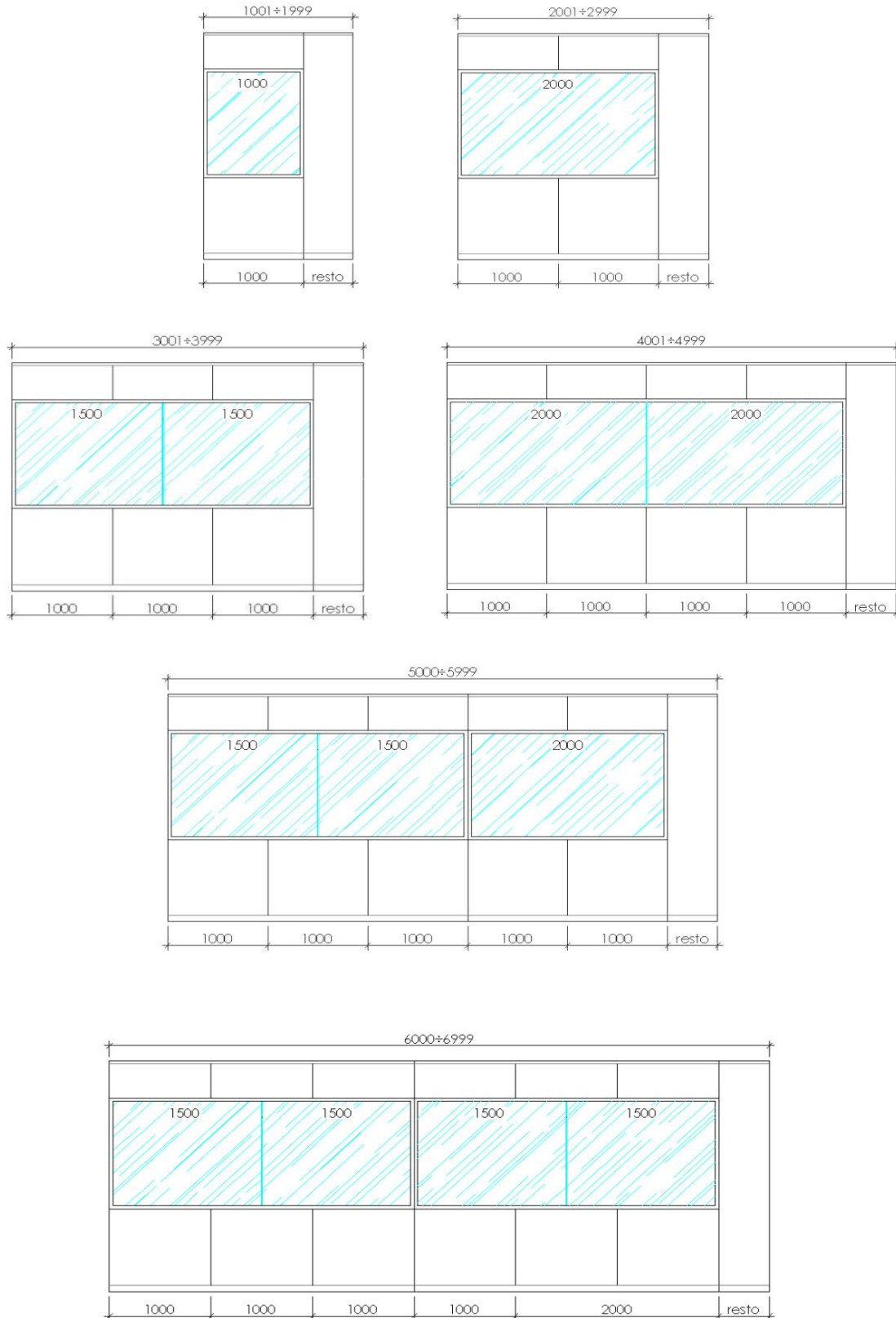
EPC1705



**EPC1707
h.max.2750mm**

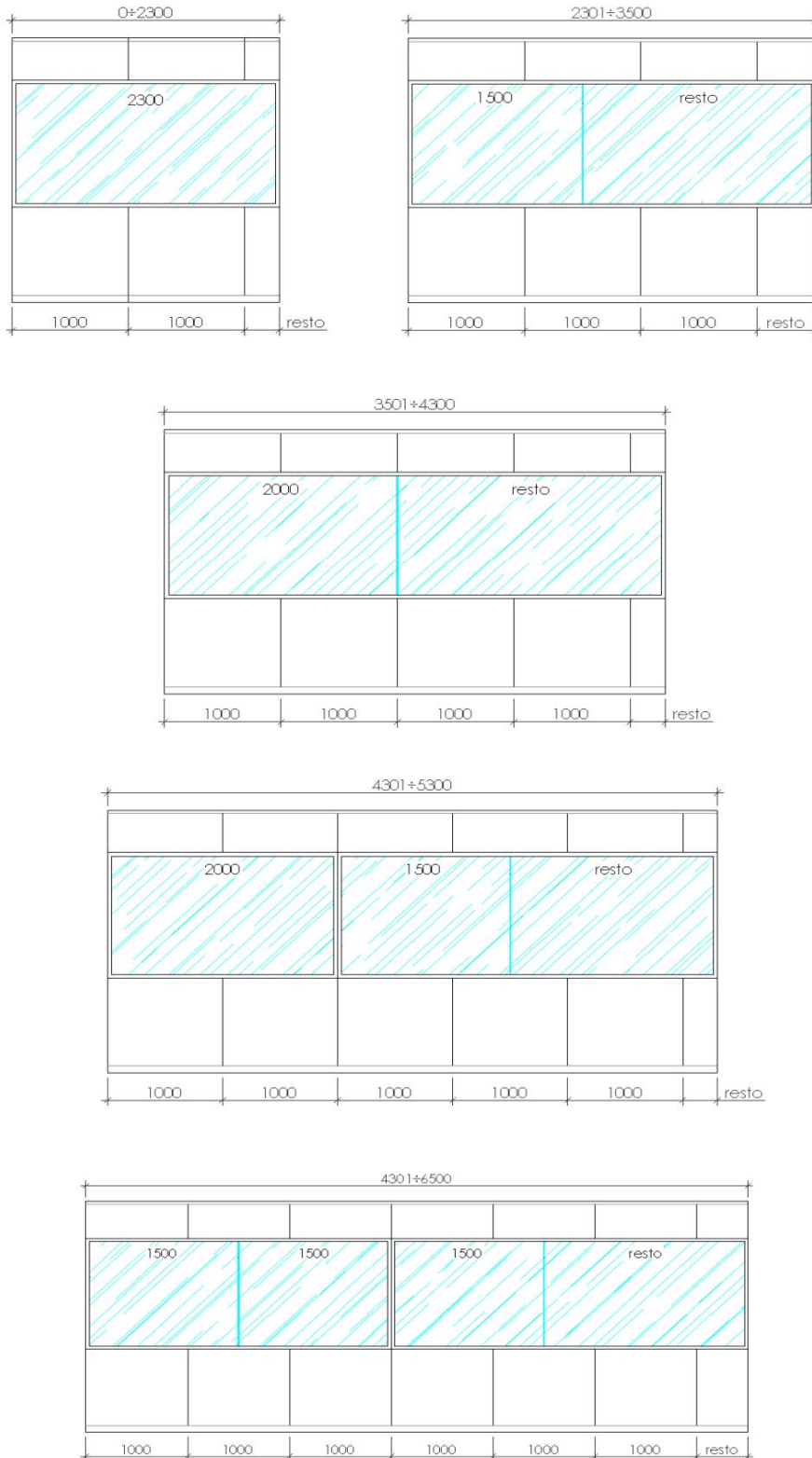
MODULATION WITH A THICK-END GLASS WITH FINAL FINISH

Modulation valid for modules: ESH01 - ESH02 - ESH03 - ESH04 - ESH05 and ESH06



MODULATION WITH AN END-FACE CRYSTAL WITHOUT A FINISHED FINISH **

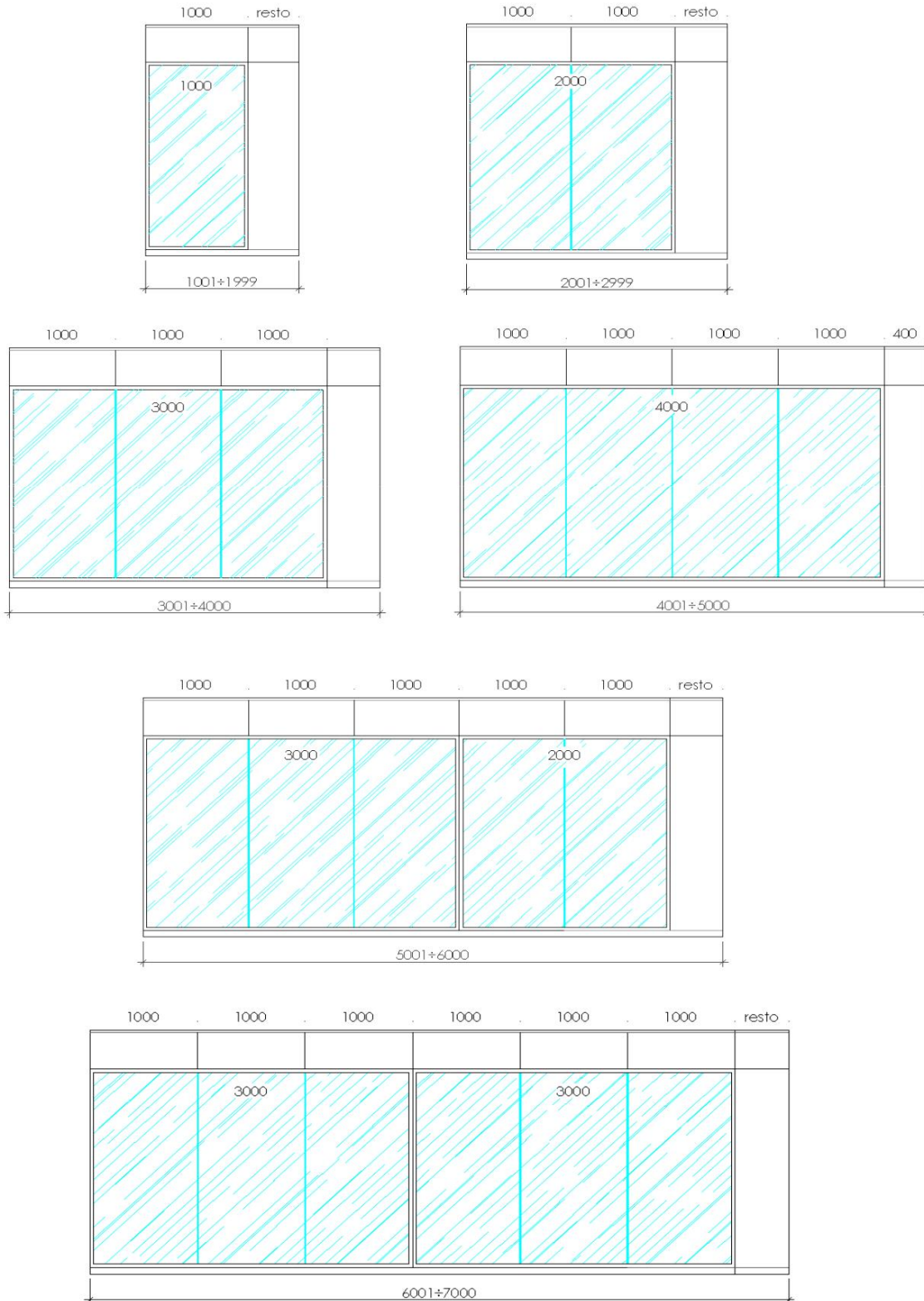
Modulation valid for modules: ESH01 - ESH02 - ESH03 - ESH04 - ESH05 and ESH06



() without final sale (Price upon request)**

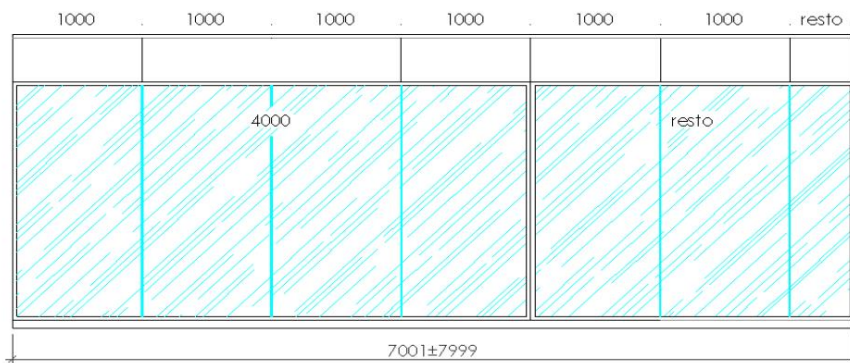
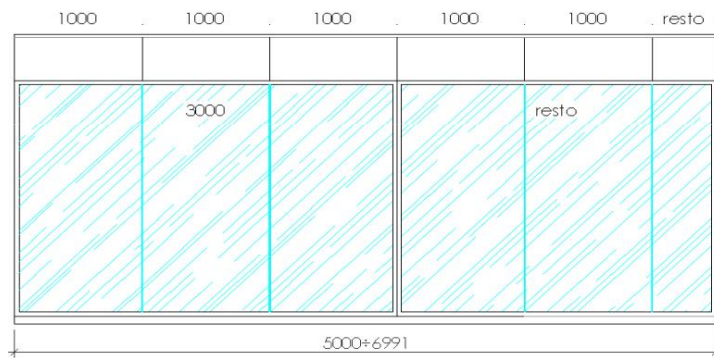
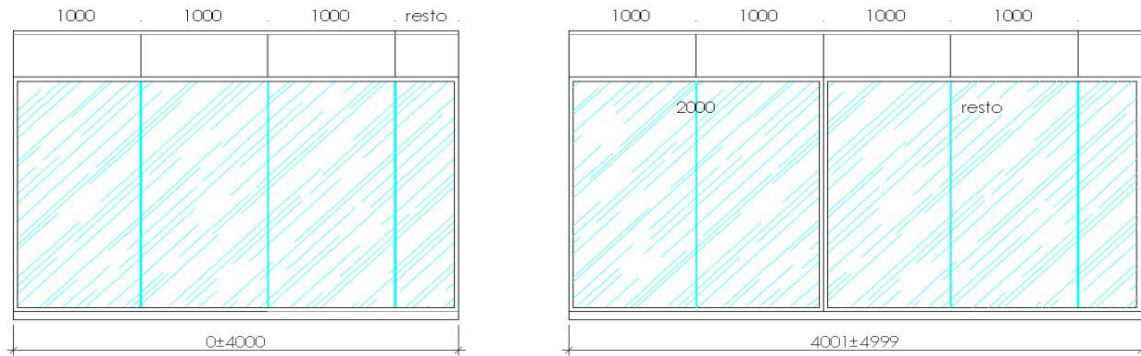
MODULATION WITH A THICK-END GLASS WITH FINAL FINISH

Modulation valid for modules: ESH07 - ESH08 - ESH09 - ESH10



MODULATION WITH AN END-FACE CRYSTAL WITHOUT A FINAL FINISH**

Modulation valid for modules: ESH07 - ESH08 - ESH09 - ESH10



() without final sale (Price upon request)**

For projects with a height exceeding 3000mm, please inquire about pricing.

Signed: PRODUCTION	Commercial Signature	Signed: TECHNICAL OFFICE
DATE	DATE	DATE